

# Octane for Exchange/Notes

Efficient, Cost Effective Management and Archiving  
of Corporate Email

## KEY BENEFITS

### Easy Access

Quick and easy access to all email and attachments, based on corporate policies and legal requests. Quickly define policies and access user content using intuitive user interface.

### Rapidly Deployable

Plug and play appliance, rapidly deployable with no integration or programming required. Supports access and management of MS Exchange and IBM Lotus Notes.

### High Speed Processing

The fastest indexing platform on the market today. Bit for bit indexing of email database provides fast processing and more reliable results, versus traditional MAPI based solutions.

### Reliable Results

Forensically sound extraction of Exchange and Notes email into an archive ensures the data is accurate and secure. Email is not converted to .eml or .msg formats, rather it is maintained in its native bit level format for reliability.

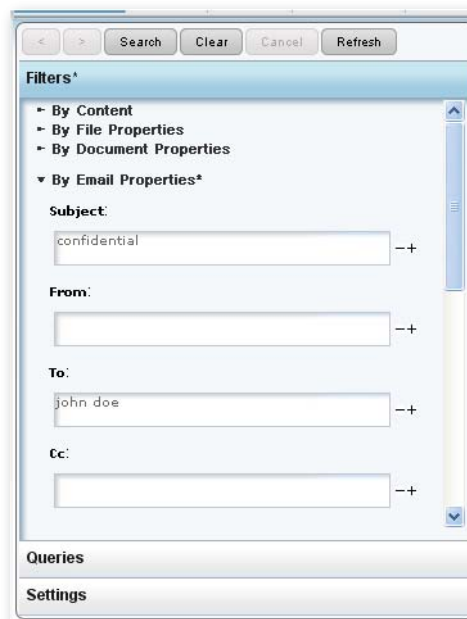
Microsoft Exchange and Lotus Notes servers contain valuable information, content that must be archived and secured in support of corporate policies. Managing and finding specific email, in support of these policies, is complex due to the sheer volume and age of content, along with the complexity of the email database and network environment. Legal teams are managing lawsuits that require quick and comprehensive preservation of relevant user email. Records managers are continually searching and securing intellectual property, shared via user email correspondence. Compliance teams are ensuring regulatory requirements are satisfied and sensitive information is managed accordingly.

Index Engines' Octane for MS Exchange and Lotus Notes solve these challenges and provides a cost-effective and comprehensive discovery and archiving platform for corporate email. Using unique bit level indexing, versus traditional MAPI based solutions, processing of the email database is quick and comprehensive. Bit for bit indexing is significantly faster than MAPI based database crawling and also indexes email that MAPI tools pass over for more comprehensive discovery.

Finding email using Octane's intuitive, browser based, search interface is easy and allows for simple or sophisticated queries and policy definition. Search email and attachment content, as well as all metadata including sent, received and deleted date, to, from, cc, bcc, subject, location and more. Policies can be run automatically so that data can be searched and extracted, in order to satisfy legal and compliance requests.

Email content extracted from Exchange and Notes can be used to populate an existing archive, or can be stored in Octane itself. Octane is the only email archive that delivers forensically sound, bit level copies of the original email content. As email and attachments are archived in Octane they are not converted to .msg or .eml formats, but remain in their native bit for bit format ensuring forensic reliability.

Octane for email is rapidly deployable, using a plug and play architecture it can be implemented in hours. Legal and compliance teams can be defining policies quickly and the content managed and secured.



# Octane for Exchange/Notes

## SPECIFICATIONS

### Server

2U Rack Mounted Server  
72 GB Memory  
8TB RAID 10 Storage  
Dual-Quad Core Processors  
(16 Cores)

### Physical Connections

LAN, Dual Port Gigabit Ethernet  
Controller

SCSI: Ultra 320 Dual Channel  
LVD Host Adapter (Tape only)

Fibre Channel: Dual Port 4 G fibre  
channel interface

SAS Interface: 8 port Host Bus  
Adapter (Tape only)

### Supported File Types

Supports all common file types  
including documents, spreadsheets,  
presentations, images and more.

Supports email including MS Ex-  
change, IBM Lotus Notes, and more.

### User Interface

Web GUI Interface for general  
administration/operation as well as  
user operation

For more technical specs go to  
[www.indexengines.com](http://www.indexengines.com)

# INDEX ENGINES™

Power Over Information

960 Homdel Road  
Holmdel, NJ 07733

phone (732) 817-1060  
email [info@indexengines.com](mailto:info@indexengines.com)  
web [www.indexengines.com](http://www.indexengines.com)

© Index Engines 2011  
All rights reserved.  
All products mentioned are trademarked by  
their respective organizations.  
DSexch(12-2011)

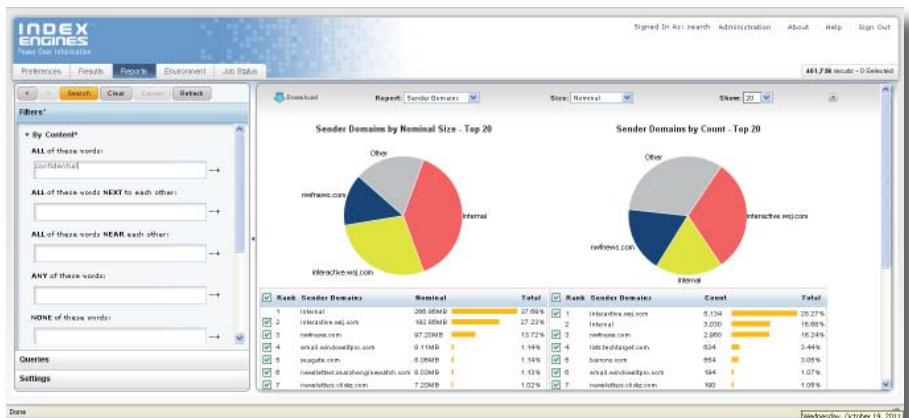
**Processing Speeds:** Utilizes proprietary bit level indexing for high speed processing of email databases with minimal impact on network infrastructure.

**Formats Supported:** Supports Microsoft Exchange, (EDB and PST), IBM Lotus Notes, internet based email (mbox), RFC 822, and more. Supports full content and metadata indexing of hundreds of common unstructured file types and attachments.

**GUI Interface:** Web based, intuitive user interface is easy to learn and use. Supports Boolean, proximity, similar, pattern search, regular expression and more.

**Extraction:** Email and attachments can be extracted from email databases, based on any metadata or content criteria, and secured in an archive or restored to disk.

**Reporting:** Powerful reports provide high level profile of the data, including age of the email, owner, location, as well as sender and receiver domains.



**Scalability:** Single engine supports billions of files and emails, supporting enterprise class deployments. Multiple appliances can be connected to handle larger projects.

**Access:** Email can be processed from online environments or offline legacy backup tapes or images.

**Reliable/Forensically Sound:** Only Octane processes and extracts email at the bit level, versus traditional MAPI based solutions. Email is not converted to .eml or .msg formats as it is archived for more reliability.

## APPLICATIONS

**Litigation Archive:** Supporting eDiscovery requests from legal has never been easier. A powerful search solution to find and manage email; extracting it to litigation hold.

**Email Archiving:** Deploy a legal or compliance archive that will manage and secure user email, according to corporate policies.

**Early Data Assessment:** Proactively manage user emails and determine liability early, in order to control resources and costs.

**Email Database Management:** Develop a high level profile of your email database, understanding the environment, so you can manage it more effectively.